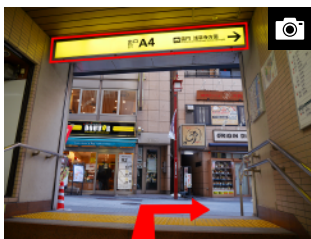




Exit A4 3 mins walk. *This exit has many stairs. We recommend the use of exit A2-b for people with strollers or a large amount of luggage.



Use exit A4 and turn right, following the signs toward Kaminarimon and Sensouji. (approx. 1 min.)



Turn left at the end of the street, following the arcade on the east side of Kaminarimon. (approx. 1 min.)



With Kaminarimon to your right, cross the street toward the Mitsui Sumitomo Bank (SMBC) and continue straight. (approx. 1 min.)



The hotel is in the building with the OZEKI supermarket on the corner. Take the elevator to the 13th floor lobby.

Exit A2-b 4 mins walk.



After getting out of the elevator, cross the street in front of you. Then, cross the street one more time toward the AEON store.



Continue straight until you approach Kaminarimon. (approx. 2 min.)



Turn left at Mitsui Sumitomo Bank (SMBC) at the end of the street, and continue walking straight. (approx. 1 min.)



The hotel is in the building with the OZEKI supermarket on the corner. Take the elevator to the 13th floor lobby.